



Certificate of Analysis

PRODUCT DETAILS		
Product Name	MENTHOL CRYSTALS	
Product Code	RMMENTCRYS	
Chemical Name	2-isopropyl-5-methylcyclohexanol	
Best Before Date	August 2026	
Batch Number	4515907	
Manufacturing Process	Steam distillation of plant - filtration - chilling - melting - blending - distillation - filtration - crystallisation - centrifugation - seiving - packing.	
Identification	CAS No: 2216-51-5	EINECS No: 218-690-9
	FEMA No: 2665	Alternative Cas:
PHYSICAL AND CHEMICAL CHARACTERISTIC		
	SPECIFICATION RANGES	RESULTS
Appearance	Crystalline Solid (Crystals)	Conforms
Colour	White / off - white	Conforms
Odour	Characteristic	Conforms
Melting Point	>=41 to <=43°C	42.1
Optical Rotation	-45° to -51°C	-49.7
Purity by GC	min 99%	99.3
STORAGE AND SHELF LIFE		
Storage	Store in tightly sealed original containers, in a cool, dry, well ventiated place.	
Shelf Life	36 months unopened and stored as above.	



CMR (Carcinogenic, mutagenic, reprotoxic) STATEMENT

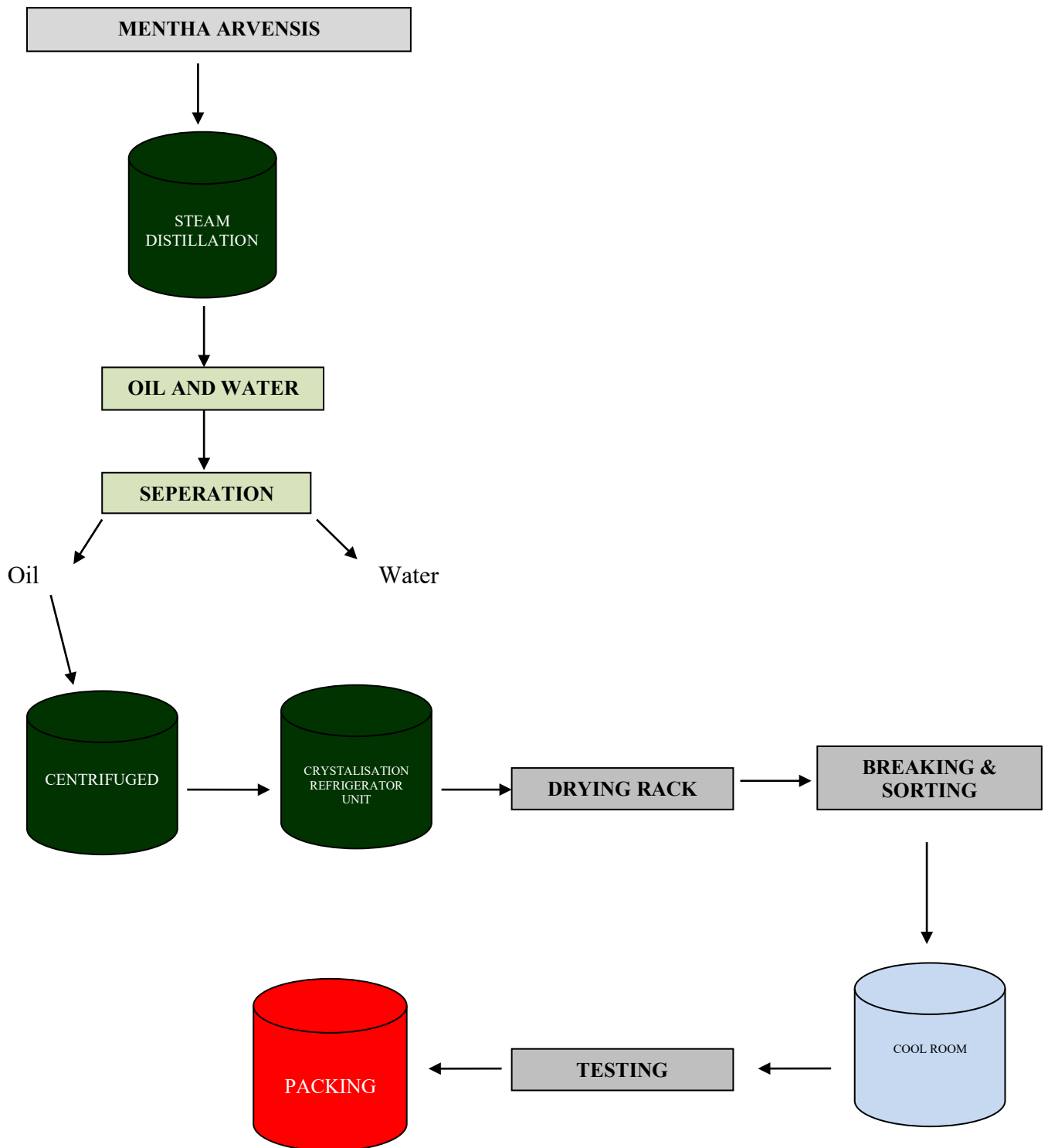
We hereby confirm, to the best of our knowledge and from information received from our supplier, that the below mentioned product does not contain any CMR Substances.

However, due to the fact that we do not analyse the batches, we cannot guarantee any explicit assurance.

Product: Menthol Crystals Chinese

15 December 2021

MENTHOL CRYSTALS FLOW CHART





SAFETY DATA SHEET MENTHOL CRYSTALS CHINESE

SECTION 1: Identification of the substance/mixture and of the company/undertaking

1.1. Product identifier

Product name	MENTHOL CRYSTALS CHINESE
Chemical name	2-isopropyl-5-methylcyclohexanol
Product number	MENTCH1001
Synonyms; trade names	L- Menthol, Menthol Natural
REACH registration number	01-2119458866-21-XXXX
CAS number	2216-51-5
EC number	218-690-9

1.2. Relevant identified uses of the substance or mixture and uses advised against

Identified uses	Component of: Cosmetic products and Pharmaceutical products. Fragrance and flavour
-----------------	--

1.3. Details of the supplier of the safety data sheet

Supplier	Madar Corporation Limited 19- 20 Sandheath Industrial Estate Fordingbridge SP6 1PA Tel. +44 1425 655 555 technical@madarcorporation.co.uk
----------	--

1.4. Emergency telephone number

SECTION 2: Hazards identification

2.1. Classification of the substance or mixture

Classification (EC 1272/2008)

Physical hazards	Not Classified
Health hazards	Skin Irrit. 2 - H315 Eye Irrit. 2 - H319
Environmental hazards	Not Classified

2.2. Label elements

EC number	218-690-9
-----------	-----------

Hazard pictograms



Signal word

Warning
19-20 Sandheath Industrial Estate, Fordingbridge, Hampshire, SP6 1PA, UK
Tel: 01425 655555 Email: technical@madarcorporation.co.uk
Page 4 of 18

MENTHOL CRYSTALS CHINESE

Hazard statements	H315 Causes skin irritation. H319 Causes serious eye irritation.
Precautionary statements	P264 Wash contaminated skin thoroughly after handling. P280 Wear protective gloves/ protective clothing/ eye protection/ face protection. P302+P352 IF ON SKIN: Wash with plenty of water. P305+P351+P338 IF IN EYES: Rinse cautiously with water for several minutes. Remove contact lenses, if present and easy to do. Continue rinsing. P332+P313 If skin irritation occurs: Get medical advice/ attention. P337+P313 If eye irritation persists: Get medical advice/ attention.
Supplementary precautionary statements	P321 Specific treatment (see medical advice on this label). P362+P364 Take off contaminated clothing and wash it before reuse.

2.3. Other hazards

SECTION 3: Composition/information on ingredients

3.1. Substances

Product name	MENTHOL CRYSTALS CHINESE
Chemical name	2-isopropyl-5-methylcyclohexanol
REACH registration number	01-2119458866-21-XXXX
CAS number	2216-51-5
EC number	218-690-9

SECTION 4: First aid measures

4.1. Description of first aid measures

General information	Move out of dangerous area. Never give anything by mouth to an unconscious person.
Inhalation	Move affected person to fresh air at once.
Ingestion	Rinse mouth thoroughly with water. Give plenty of water to drink. Do not induce vomiting. If vomiting occurs, the head should be kept low so that vomit does not enter the lungs. Get medical attention if symptoms are severe or persist.
Skin contact	Wash skin thoroughly with soap and water. Get medical attention if irritation persists after washing.
Eye contact	Remove any contact lenses and open eyelids wide apart. Rinse immediately with plenty of water. Continue to rinse for at least 15 minutes and get medical attention.

4.2. Most important symptoms and effects, both acute and delayed

Skin contact	Irritating to skin.
Eye contact	Causes serious eye irritation.

4.3. Indication of any immediate medical attention and special treatment needed

SECTION 5: Firefighting measures

5.1. Extinguishing media

Suitable extinguishing media	Use alcohol-resistant foam, carbon dioxide or dry powder to extinguish.
Unsuitable extinguishing media	Do not use water jet as an extinguisher, as this will spread the fire.

5.2. Special hazards arising from the substance or mixture

5.3. Advice for firefighters

19-20 Sandeheath Industrial Estate, Fordingbridge, Hampshire, SP6 1PA, UK

Tel: 01425 655555 Email: technical@madarcorporation.co.uk

MENTHOL CRYSTALS CHINESE

Protective actions during firefighting Do not inhale explosion and/or combustion gases. Use self contained breathing apparatus. Cool containers exposed to flames with water until well after the fire is out.

Special protective equipment for firefighters Wear positive-pressure self-contained breathing apparatus (SCBA) and appropriate protective clothing.

SECTION 6: Accidental release measures

6.1. Personal precautions, protective equipment and emergency procedures

Personal precautions Ensure adequate ventilation of the working area, evacuate personnel to safe area, wear suitable protective equipment.

6.2. Environmental precautions

Environmental precautions Do not discharge into drains or watercourses or onto the ground.

6.3. Methods and material for containment and cleaning up

Methods for cleaning up Collect powder using special dust vacuum cleaner with particle filter or carefully sweep into suitable waste disposal containers and seal securely.

6.4. Reference to other sections

Reference to other sections For waste disposal, see Section 13.

SECTION 7: Handling and storage

7.1. Precautions for safe handling

Usage precautions Avoid contact with skin and eyes. Wear protective clothing as described in Section 8 of this safety data sheet. Do not eat, drink or smoke when using this product.

7.2. Conditions for safe storage, including any incompatibilities

Storage precautions Store in tightly-closed, original container in a well-ventilated place. Protect from sunlight. Keep away from heat.

7.3. Specific end use(s)

SECTION 8: Exposure controls/Personal protection

8.1. Control parameters

8.2. Exposure controls

Protective equipment



Appropriate engineering controls

Provide adequate ventilation.

Personal protection

General protective and hygienic measures: Use personal protective equipment depending on concentration and amount of hazardous substance. Keep away from foodstuffs, beverages and feed. Immediately remove all soiled and contaminated clothing. Wash hands before breaks and at the end of work. Avoid contact with eyes and skin.

Eye/face protection

Approved safety goggles.

Hand protection

Chemical resistant gloves (PVC)

Other skin and body protection

Avoid contact with skin.

Hygiene measures

Good personal hygiene procedures should be implemented
19-20 Sandheath Industrial Estate, Fordingbridge, Hampshire, SP6 1PA, UK

Tel: 01425 655555 Email: technical@madarcorporation.co.uk

MENTHOL CRYSTALS CHINESE

Respiratory protection Generally unnecessary in a well ventilated area.
If ventilation is insufficient, respiratory protection must be worn.

Environmental exposure controls Avoid discharging into drains.

SECTION 9: Physical and chemical properties

9.1. Information on basic physical and chemical properties

Appearance	Crystalline solid.
Colour	White/off-white.
Odour	Characteristic.
Melting point	>=41 - <=43°C
Initial boiling point and range	212°C @ 1 atm
Flash point	REACH dossier information. The test items flash point at room temperature of 22 ± 2°C and atmospheric pressure 102.0 kPa is 94 ± 2°C
Flammability (solid, gas)	REACH dossier information. Scientifically unjustified.
Vapour pressure	21 Pa @ 25°C
Bulk density	0.49 g/cm ³
Solubility(ies)	REACH dossier information. Slightly soluble in water. Very soluble in the following materials: Ethanol. Chloroform.
Partition coefficient	log Pow 3.13 @ 25°C
Viscosity	REACH dossier information. Scientifically unjustified.
Explosive properties	REACH dossier information. Scientifically unjustified.
Optical rotation	-45° to -51°c

9.2. Other information

Hydrocarbon Content

SECTION 10: Stability and reactivity

10.1. Reactivity

Reactivity No hazardous reactions if stored and handled as prescribed / indicated.

10.2. Chemical stability

Stability Stable under normal conditions.

10.3. Possibility of hazardous reactions

10.4. Conditions to avoid

Conditions to avoid Avoid exposure to high temperatures or direct sunlight.

10.5. Incompatible materials

10.6. Hazardous decomposition products

SECTION 11: Toxicological information

11.1. Information on toxicological effects

Toxicological effects No information available.

MENTHOL CRYSTALS CHINESE

SECTION 12: Ecological information

12.1. Toxicity

12.2. Persistence and degradability

Biodegradation The substance is readily biodegradable.

12.3. Bioaccumulative potential

Bioaccumulative potential REACH DOSSIER INFORMATION - Concluded that the substance menthol has no bio accumulation potential.

Partition coefficient log Pow 3.13 @ 25°C

12.4. Mobility in soil

Henry's law constant 4.8 Pa m³/mol @ 12°C

12.5. Results of PBT and vPvB assessment

Results of PBT and vPvB assessment This product does not contain any substances classified as PBT or vPvB.

12.6. Other adverse effects

SECTION 13: Disposal considerations

13.1. Waste treatment methods

General information Dispose of in compliance with all local and national regulations.

SECTION 14: Transport information

General The product is not covered by international regulations on the transport of dangerous goods (IMDG, IATA, ADR/RID).

14.1. UN number

Not applicable.

14.2. UN proper shipping name

Not applicable.

14.3. Transport hazard class(es)

No transport warning sign required.

14.4. Packing group

Not applicable.

14.5. Environmental hazards

Environmentally hazardous substance/marine pollutant

No.

14.6. Special precautions for user

Not applicable.

14.7. Transport in bulk according to Annex II of MARPOL and the IBC Code

Transport in bulk according to Not applicable.

**Annex II of MARPOL 73/78
and the IBC Code**

MENTHOL CRYSTALS CHINESE

SECTION 15: Regulatory information

15.1. Safety, health and environmental regulations/legislation specific for the substance or mixture

EU legislation Regulation (EC) No 1272/2008 of the European Parliament and of the Council of 16 December 2008 on classification, labelling and packaging of substances and mixtures (as amended).

Guidance CHIP for everyone HSG228.

15.2. Chemical safety assessment

Inventories

EU - EINECS/ELINCS

Listed

Canada - DSL/NDSL

Listed

US - TSCA

Listed

US - TSCA 12(b) Export Notification

Not listed.

Australia - AICS

Listed

Japan - ENCS

Listed

Korea - KECI

Listed

China - IECSC

Listed

Philippines – PICCS

Listed

New Zealand - NZIOC

Listed

Taiwan - NECI

Listed

SECTION 16: Other information

Revision date 11/03/2019

Revision 4

Supersedes date 05/06/2018

SDS number 5025

Hazard statements in full H315 Causes skin irritation.
H319 Causes serious eye irritation.

MENTHOL CRYSTALS CHINESE

This information relates only to the specific material designated and may not be valid for such material used in combination with any other materials or in any process. Such information is, to the best of the company's knowledge and belief, accurate and reliable as of the date indicated. However, no warranty, guarantee or representation is made to its accuracy, reliability or completeness. It is the user's responsibility to satisfy himself as to the suitability of such information for his own particular use.



**SAFETY DATA SHEET
MENTHOL CRYSTALS CHINESE**

SECTION 1: Identification of the substance/mixture and of the company/undertaking

1.1. Product identifier

Product name	MENTHOL CRYSTALS CHINESE
Chemical name	2-isopropyl-5-methylcyclohexanol
Product number	MENTCH1001
Synonyms; trade names	L- Menthol, Menthol Natural
EU REACH registration number	01-2119458866-21-XXXX
CAS number	2216-51-5
EC number	218-690-9

1.2. Relevant identified uses of the substance or mixture and uses advised against

Identified uses Component of: Cosmetic products and Pharmaceutical products. Fragrance and flavour

1.3. Details of the supplier of the safety data sheet

Supplier Madar Corporation Limited
19 - 20 Sandeheath Industrial Estate
Fordingbridge
SP6 1PA
Tel. 01425 655 555
e-mail technical@madarcorporation.co.uk

1.4. Emergency telephone number

SECTION 2: Hazards identification

2.1. Classification of the substance or mixture

Classification (SI 2019 No. 720)

Physical hazards	Not Classified
Health hazards	Skin Irrit. 2 - H315 Eye Irrit. 2 - H319
Environmental hazards	Not Classified

2.2. Label elements

EC number 218-690-9

Hazard pictograms



MENTHOL CRYSTALS CHINESE

Signal word	Warning
Hazard statements	H315 Causes skin irritation. H319 Causes serious eye irritation.
Precautionary statements	P264 Wash contaminated skin thoroughly after handling. P280 Wear protective gloves/ protective clothing/ eye protection/ face protection. P302+P352 IF ON SKIN: Wash with plenty of water. P305+P351+P338 IF IN EYES: Rinse cautiously with water for several minutes. Remove contact lenses, if present and easy to do. Continue rinsing. P332+P313 If skin irritation occurs: Get medical advice/ attention. P337+P313 If eye irritation persists: Get medical advice/ attention.
Supplementary precautionary statements	P321 Specific treatment (see medical advice on this label). P362+P364 Take off contaminated clothing and wash it before reuse.

2.3. Other hazards

SECTION 3: Composition/information on ingredients

3.1. Substances

Product name	MENTHOL CRYSTALS CHINESE
Chemical name	2-isopropyl-5-methylcyclohexanol
CAS number	2216-51-5
EC number	218-690-9

SECTION 4: First aid measures

4.1. Description of first aid measures

General information	Move out of dangerous area. Never give anything by mouth to an unconscious person.
Inhalation	Move affected person to fresh air at once.
Ingestion	Rinse mouth thoroughly with water. Give plenty of water to drink. Do not induce vomiting. If vomiting occurs, the head should be kept low so that vomit does not enter the lungs. Get medical attention if symptoms are severe or persist.
Skin contact	Wash skin thoroughly with soap and water. Get medical attention if irritation persists after washing.
Eye contact	Remove any contact lenses and open eyelids wide apart. Rinse immediately with plenty of water. Continue to rinse for at least 15 minutes and get medical attention.

4.2. Most important symptoms and effects, both acute and delayed

Skin contact	Irritating to skin.
Eye contact	Causes serious eye irritation.

4.3. Indication of any immediate medical attention and special treatment needed

SECTION 5: Firefighting measures

5.1. Extinguishing media

Suitable extinguishing media	Use alcohol-resistant foam, carbon dioxide or dry powder to extinguish.
Unsuitable extinguishing media	Do not use water jet as an extinguisher, as this will spread the fire.

5.2. Special hazards arising from the substance or mixture

5.3. Advice for firefighters

19-20 Sande Heath Industrial Estate, Fordingbridge, Hampshire, SP6 1PA, UK

Tel: 01425 655555 Email: technical@madarcorporation.co.uk

MENTHOL CRYSTALS CHINESE

Protective actions during firefighting	Do not inhale explosion and/or combustion gases. Use self contained breathing apparatus. Cool containers exposed to flames with water until well after the fire is out.
Special protective equipment for firefighters	Wear positive-pressure self-contained breathing apparatus (SCBA) and appropriate protective clothing.

SECTION 6: Accidental release measures

6.1. Personal precautions, protective equipment and emergency procedures

Personal precautions	Ensure adequate ventilation of the working area, evacuate personnel to safe area, wear suitable protective equipment.
-----------------------------	---

6.2. Environmental precautions

Environmental precautions	Do not discharge into drains or watercourses or onto the ground.
----------------------------------	--

6.3. Methods and material for containment and cleaning up

Methods for cleaning up	Collect powder using special dust vacuum cleaner with particle filter or carefully sweep into suitable waste disposal containers and seal securely.
--------------------------------	---

6.4. Reference to other sections

Reference to other sections	For waste disposal, see Section 13.
------------------------------------	-------------------------------------

SECTION 7: Handling and storage

7.1. Precautions for safe handling

Usage precautions	Avoid contact with skin and eyes. Wear protective clothing as described in Section 8 of this safety data sheet. Do not eat, drink or smoke when using this product.
--------------------------	---

7.2. Conditions for safe storage, including any incompatibilities

Storage precautions	Store in tightly-closed, original container in a well-ventilated place. Protect from sunlight. Keep away from heat.
----------------------------	---

7.3. Specific end use(s)

SECTION 8: Exposure controls/Personal protection

8.1. Control parameters

8.2. Exposure controls

Protective equipment



Appropriate engineering controls

Provide adequate ventilation.

Personal protection

General protective and hygienic measures: Use personal protective equipment depending on concentration and amount of hazardous substance. Keep away from foodstuffs, beverages and feed. Immediately remove all soiled and contaminated clothing. Wash hands before breaks and at the end of work. Avoid contact with eyes and skin.

Eye/face protection

Approved safety goggles.

Hand protection

Chemical resistant gloves (PVC)

Other skin and body protection

Avoid contact with skin.

Hygiene measures

Good personal hygiene procedures should be implemented
19-20 Sandleheath Industrial Estate, Fordingbridge, Hampshire, SP6 1PA, UK

Tel: 01425 655555 Email: technical@madarcorporation.co.uk

MENTHOL CRYSTALS CHINESE

Respiratory protection Generally unnecessary in a well ventilated area.
If ventilation is insufficient, respiratory protection must be worn.

Environmental exposure controls Avoid discharging into drains.

SECTION 9: Physical and chemical properties

9.1. Information on basic physical and chemical properties

Appearance	Crystalline solid.
Colour	White/off-white.
Odour	Characteristic.
Melting point	>=41 - <=43°C
Initial boiling point and range	212°C @ 1 atm
Flash point	REACH dossier information. The test items flash point at room temperature of 22 ± 2°C and atmospheric pressure 102.0 kPa is 94 ± 2°C
Flammability (solid, gas)	REACH dossier information. Scientifically unjustified.
Vapour pressure	21 Pa @ 25°C
Bulk density	0.49 g/cm ³
Solubility(ies)	REACH dossier information. Slightly soluble in water. Very soluble in the following materials: Ethanol. Chloroform.
Partition coefficient	log Pow 3.13 @ 25°C
Viscosity	REACH dossier information. Scientifically unjustified.
Explosive properties	REACH dossier information. Scientifically unjustified.
Optical rotation	-45° to -51°c

9.2. Other information

Hydrocarbon Content

SECTION 10: Stability and reactivity

10.1. Reactivity

Reactivity No hazardous reactions if stored and handled as prescribed / indicated.

10.2. Chemical stability

Stability Stable under normal conditions.

10.3. Possibility of hazardous reactions

10.4. Conditions to avoid

Conditions to avoid Avoid exposure to high temperatures or direct sunlight.

10.5. Incompatible materials

10.6. Hazardous decomposition products

SECTION 11: Toxicological information

11.1. Information on toxicological effects

Toxicological effects No information available.

MENTHOL CRYSTALS CHINESE

SECTION 12: Ecological information

12.1. Toxicity

12.2. Persistence and degradability

Biodegradation The substance is readily biodegradable.

12.3. Bioaccumulative potential

Bioaccumulative potential REACH DOSSIER INFORMATION - Concluded that the substance menthol has no bio accumulation potential.

Partition coefficient log Pow 3.13 @ 25°C

12.4. Mobility in soil

Henry's law constant 4.8 Pa m³/mol @ 12°C

12.5. Results of PBT and vPvB assessment

Results of PBT and vPvB assessment This product does not contain any substances classified as PBT or vPvB.

12.6. Other adverse effects

SECTION 13: Disposal considerations

13.1. Waste treatment methods

General information Dispose of in compliance with all local and national regulations.

SECTION 14: Transport information

General The product is not covered by international regulations on the transport of dangerous goods (IMDG, IATA, ADR/RID).

14.1. UN number

Not applicable.

14.2. UN proper shipping name

Not applicable.

14.3. Transport hazard class(es)

No transport warning sign required.

14.4. Packing group

Not applicable.

14.5. Environmental hazards

Environmentally hazardous substance/marine pollutant

No.

14.6. Special precautions for user

Not applicable.

14.7. Transport in bulk according to Annex II of MARPOL and the IBC Code

Transport in bulk according to Not applicable.

Annex II of MARPOL 73/78 and the IBC Code

MENTHOL CRYSTALS CHINESE

SECTION 15: Regulatory information

15.1. Safety, health and environmental regulations/legislation specific for the substance or mixture

Guidance CHIP for everyone HSG228.

15.2. Chemical safety assessment

Inventories

EU - EINECS/ELINCS

Listed

Canada - DSL/NDSL

Listed

US - TSCA

Listed

US - TSCA 12(b) Export Notification

Not listed.

Australia - AIC

Listed

Japan - ENCS

Listed

Korea - KECI

Listed

China - IECSC

Listed

Philippines – PICCS

Listed

New Zealand - NZIOC

Listed

Taiwan - TCSI

Listed

SECTION 16: Other information

Revision date	27/10/2022
Revision	5
Supersedes date	11/03/2019
SDS number	5025
Hazard statements in full	H315 Causes skin irritation. H319 Causes serious eye irritation.

This information relates only to the specific material designated and may not be valid for such material used in combination with any other materials or in any process. Such information is, to the best of the company's knowledge and belief, accurate and reliable as of the date indicated. However, no warranty, guarantee or representation is made to its accuracy, reliability or completeness. It is the user's responsibility to satisfy himself as to the suitability of such information for his own particular use.

19-20 Sandheath Industrial Estate, Fordingbridge, Hampshire, SP6 1PA, UK

Tel: 01425 655555 Email: technical@madarcorporation.co.uk



Product Specification

PRODUCT DETAILS		
Product Name	MENTHOL CRYSTALS	
Product Code		
Chemical Name	2-isopropyl-5-methylcyclohexanol	
Country of Origin	China / India	
Tariff Number	29061100	
REACH Registration	01-2119458866-21-XXXX	
Natural Status	We hereby declare, to the best of our knowledge and from information received from our supplier, that this product is in accordance to the requirements of Articles 3 (2) (d) of Regulation (EC) 1334/2008 and therefore can be designated as natural.	
Food Grade Status	We confirm, from information received from our supplier, that this product conforms with EU Regulations and can be used in food.	
Kosher Certified	Yes	
Halal Certified	We hereby delcare, from information received from our supplier, that this product does not contain any ingredient derived from animal origin, extracted from hair or feathers, animal fats, animal extracts, blood of any origin, blood plasma, pork and/or other meat products. This product does not contain alcohol (ethanol or grain alcohol) and has not been used in the manufacturing process.	
GMO Declaration	To the best of our knowledge and from information received from our supplier, this product does not derive from genetically modified starting raw material, or additives that are derived from genetically modified organisms.	
Manufacturing Process	Steam distillation of plant - filtration - chilling - melting - blending - distillation - filtration - crystallisation - centrifugation - seiving - packing.	
Identification	CAS No: 2216-51-5	EINECS No: 218-690-9
	FEMA No: 2665	Alternative Cas:
PHYSICAL AND CHEMICAL CHARACTERISTIC		
Appearance	Crystalline Solid (Crystals)	
Colour	White / off - white	
Odour	Characteristic	
Melting Point	>=41 to <=43°c	
Initial boiling point	212°c @ 1 atm	
Flash point	REACH dossier information. The test items flash point at roomm temperature of 22 ± 2c and atmospheric pressure 102.0 kPa is 94 ± 2c	
Vapour pressure	21 Pa @ 25°c	
Bulk Density @ 20°c	0.49 g/cm ³	
Optical Rotation	-45° to -51°	
Purity by GC	min 99%	
FRAGRANCE ALLERGENS		
NONE PRESENT		
FOOD ALLERGENS		
NONE PRESENT		
IFRA		
NONE PRESENT		
STORAGE AND SHELF LIFE		
Storage	Store in tightly sealed original containers, in a cool, dry, well ventiated place.	
Shelf Life	36 months in cool place (25+2°c) away from heat and sunlight	

DISCLAIMER: This information relates only to the specific material designated and may not be valid for such material used in combination with any other materials or in any process. Such information is, to the best of the Company's knowledge and belief, accurate and reliable as of the date indicated. However, no warranty, guarantee or representation is made to its accuracy, reliability or completeness. It is the users responsibility to satisfy himself as to the suitability of such information for his own particular use. Where we make a declaration that allergenic material are not present in any product, this statement is made assuming reasonable levels of detection. It is impossible to guarantee the "absolute absence" of any material. It is the ultimate responsibility of the customer to ensure the safety of the intended final product containing this material, by carrying out additional tests if necessary.



Vegan and Vegetarian Statement

IDENTIFICATION	
Product:	Menthol Crystals
Cas No:	2216-51-5
EINECS No:	218-690-9
STATEMENT	
<p>We, Madar Corporation Limited, from information received from our supplier, hereby declare that the material listed above is compliant with a vegan or vegetarian diet.</p> <p>It does not contain any animal ingredients or animal by products. No animal ingredients or by products are used in the manufacturing process.</p> <p>This document represents to the best of our knowledge and from information received from our supplier. It does not release the buyer from the obligation to carry out an examination of the goods received. All uses made by the buyer are done under their own responsibility.</p>	